



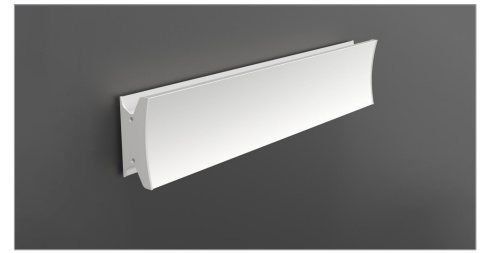
Project:	Type:
Notes:	

LINEACURVE wall/ceiling

design Artemide North America

#CAT	LENGTH	EMISSION	CRI	CCT	DRIVER	FINISH
USC-RDLC						

QUANTITY



Length	M = mini 1 = 12in 2 = 24in 3 = 36in
Emission	D = mono (1 side illuminated) B = dual (2 side illuminated)
CRI	8 = 80 CRI+ 9 = 90 CRI+
CCT	30 = 3000k 35 = 3500k
Driver	06 = Phase Dimming 2-wire 120V* (also on/off 277V) 08 = 0-10V Dimming 120V-277V
Finish	AN = textured Anthracite powder coat W = textured White powder coat

*Compatible with most forward or reverse phase dimmers.

TECHNICAL DATA : (80CRI 3500K model rating)

	mini	1	2	3
Dual				
Input Powder	12.2 W	19.6 W	41.8 W	58.8 W
Lumen Output	516 lm	874 lm	1835 lm	2560 lm
Efficacy	42.4 lm/W	44.6 lm/W	43.8 lm/W	43.5 lm/W

	mini	1	2	3
Mono				
Input Powder	6.1 W	9.8 W	20.9 W	29.4 W
Lumen Output	258 lm	437 lm	917 lm	1280 lm
Efficacy	42.4 lm/W	44.6 lm/W	43.8 lm/W	43.5 lm/W

FEATURES:

Construction : Body in extruded aluminum with textured powder coat finish. End caps in aluminum same color as the body. Extrusion covers junction box dimension. 'Pig-tail' option on backplate available on 1, 2 and 3 feet only.

Note : For other finishes, please contact your local Artemide sales representative.

Weight

mini - 2lbs (0.9kg)

1 - 3lbs (1.3kg)

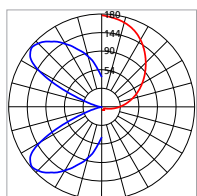
2 - 6lbs (2.7kg)

3 - 8lbs (3.6kg)

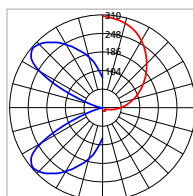
Labels : **us** - suitable for damp locations **ADA**

Class : **IP20**

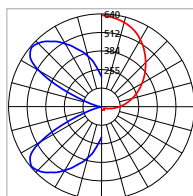
PHOTOMETRIC DATA:



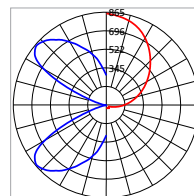
Max Candela linea mini
130° vertical = 178
180° horizontal = 178



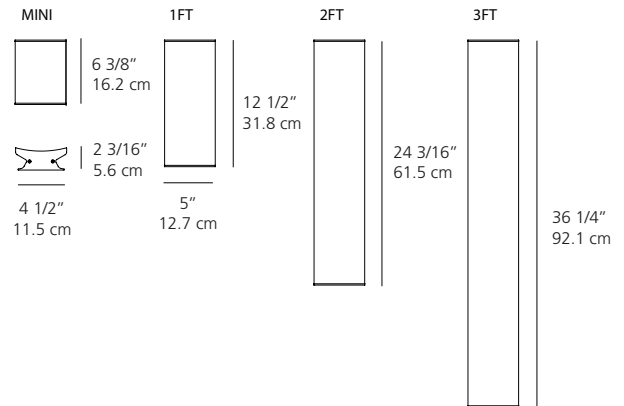
Max Candela linea 1ft
132.5° vertical = 306
180° horizontal = 306



Max Candela linea 2ft
135° vertical = 638
180° horizontal = 638



Max Candela linea 3ft
132.5° vertical = 865
180° horizontal = 865



Project Name	
Floorplan Ref. Type	
Quantity	
Notes	
Date	
Signature & Stamp	